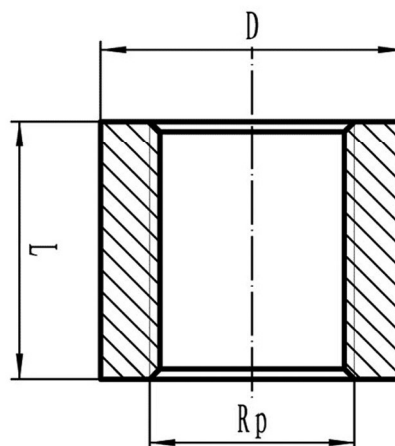


# Art. 8.0272



**Beschrieb:** Halbmuffe  
**Material:** Edelstahl AISI 316 - 1.4408 / ISO 4144  
**Gewindeart:** IG-Rp / ISO 7-1  
**Bemerkungen:** SVGW Wasser 3/8" - 4"  
 SVGW Gas 3/4" - 2"

**Description:** demi-manchon  
**Matériel:** inox AISI 316 - 1.4408 / ISO 4144  
**Filetage:** f-Rp / ISO 7-1  
**Remarques:** SSIGE Eau 3/8" - 4"  
 SSIGE Gaz 3/4" - 2"



8.0272.	038	050	075	100	125	150	200
Rp	3/8"	1/2"	3/4"	1"	1 1/4"	1 1/2"	2"
D	20	25	30	39	48	55	66
L	11,5	15	16,5	19	21,5	21,5	26
<b>Verpackung / Emballage</b>							
Polybag	10	10	10	10	10	10	5